

# SINGAPORE

Arrive: 0800 Wednesday, 20 February  
Onboard: 1800 Thursday, 21 February

**Brief Overview:** Lying almost on the equator, Singapore is a thriving island nation that has overcome its lack of natural resources to become one of the strongest economies in Asia. Thus, this small city-state boasts very large attractions and achievements and serves as a great springboard into the region. Strategically situated on the tip of the Malaysian peninsula, Singapore has made itself the busiest port in the world, perhaps rooted in its founding as a British trading colony in 1819. Nonetheless, Singapore's bustling metropolis is known for its legendary cleanliness (note: spitting chewing gum on the street is considered an illegal offense!). Combining the skyscrapers and subways of a modern, affluent city with a medley of Chinese, Malay and Indian historical influences gives this destination a unique cultural flare. This multicultural background makes for fun exploration of ethnic neighborhoods and celebration of exotic local cuisine. In addition to a vibrant night-life scene and extravagant shopping malls, this enchanting "Garden City" is covered by greenery with over 50 major parks and 4 nature reserves.



**IMPORTANT:** If you registered in one of the following courses, you have a field lab on the specified day.  
Do not make any other travel plans as this is a designated class day in port for your course.

SINGAPORE			Wednesday, 20 February	Thursday, 21 February
SNGL1	BIOL 1559-101	Professor Garrett	Biology for the New Millennium	
SNGL2	SEMS 3500-105	Professor Girard	Global Comparative Leadership	
SNGL3	CE 3100	Professor Johnson	Water for the World	
SNGL4	DRAM 3559	Professor Kattwinkel	World Theatre and Performance	
SNGL5	PLIR 3500	Professor Reynolds	China's Emerging Role in Global Governance	
SNGL6	EDLF 3500	Professor Strouse	Sociology of Education	
SNGL7	PSYC 4559-101	Professor C. Morris		Cognitive Psychology
SNGL8	HIST 3559-101	Professor Walker		WWII in Asia and Africa
SNGL9	SEMS 2500-104	Professor Ropka		Fundamentals of Epidemiology

## Day 1: Wednesday, February 20

SNG 103-101

PULAU UBIN “BACK TO NATURE”

Half day



Pulau Ubin, an island off the northeastern coast of Singapore, is a rich resource of granite, which is why it is also known as the “Stone Mountain.” Pulau Ubin has unending natural intrigues – newly-hatched fish, prawns, crabs and all kinds of burrowing creatures find their home by the mangroves which make up most of the coastline. Away from the coastline, secondary forests are interspersed with small rubber plantations and coconut groves. You may chance upon abandoned gardens and farms laden with local fruits such as durian, rambutan and chempedak.

Transfer to Changi Jetty where you will board a bumboat for the ten-minute ride to Pulau Ubin. Upon arrival in Pulau Ubin, proceed on an orientation tour by bicycle. (Bike rental is included.) Discover the island, the villagers and scenery on a leisurely trip around various areas, including a visit to the quarry. Discover the secrets of tropical plants with a professional botanist/naturalist on this easy-going walk, which takes about two hours to complete. It is an excellent introduction to the rustic and natural character of the island. You will be able to touch, see and smell fruit trees, spices and herbs for cooking, plants used in traditional medicine and native plants of the mangrove forest. **Please note:** Sturdy walking shoes are recommended.

STANDARD PRICE		Early Booking
Adult	\$66	\$63
Child	\$33	\$31.50
TIME		
	Date	Time
Depart	February 20	0900
Return	February 20	1300
HIGHLIGHTS		
<ul style="list-style-type: none"><li>Tour the unique island of Pulau Ubin</li><li>Bicycle Tour</li></ul>		

SNG 100-101

“ESSENCE OF SINGAPORE”

Half day

This orientation to the city begins with a stop at the “colonial heart” for a view of Padang (the Cricket Club), Parliament House, Supreme Court and City Hall. Then proceed to Singapore City Gallery where an exciting light and sound show provides an orientation to all major places of interest.



Next, visit The NEWater Visitor Centre, opened in 2003. The Centre highlights the importance of water and how Singapore uses advances in technology to reclaim water. Visitors are able to view firsthand the operation of the advanced dual-membrane and ultraviolet technologies used to produce NEWater.

Continue your tour to Marina Barage, Singapore’s very first reservoir in the city. Interweaving greenery with city chic, the Marina Barrage gives you the height of technological sophistication in the throes of urban vibrancy. Situated at the heart of the up and coming Marina South district, this colossal architectural masterpiece is a must-see. Take a stroll through the barrage’s vast compounds and come face to face with stunning engineering equipment. Visit the intriguing gallery and discover how the barrage ingeniously prevents flooding to the city’s low-lying areas. Or simply stand atop the green roof to take in the sweeping Singapore city skyline.

Finally, embark on the 30-minute flight on Singapore Flyer, the world’s largest observation wheel. Standing at a stunning 165m from the ground, the Flyer offers you breathtaking, panoramic views of the Marina Bay, our island city and beyond.

STANDARD PRICE		Early Booking
Adult	\$60	\$57
Child	\$30	\$28.50
TIME		
	Date	Time
Depart	February 20	0930
Return	February 20	1330
HIGHLIGHTS		
<ul style="list-style-type: none"><li>Tour sites at “colonial heart” of Singapore</li><li>NEWater Visitor Centre &amp; facilities</li><li>Singapore Flyer, world’s largest observation wheel</li></ul>		

## SNG 102-102

## THE OTHER SIDE OF SINGAPORE

Half day

Travel to the new site of the infamous Changi Prison to visit the museum and view a replica of the chapel, used during World War II. Your guide will recount the collective spirit which rose through the darkest times of the Japanese Occupation during World War II. Continue to Changi Village, passing by the Changi Yacht Club. Sample the roti prata Indian snacks at a kopitiam (local coffee shop) in Changi Village. Then drive through Tampines New Town, a typical heartland of present day Singapore with a stop at a Chinese Temple that houses nine deities under one roof. Finally, proceed to Malay Village, which showcases the rich cultural heritage of the Malays and relives life in a Malay kampung in the 50s and 60s.



STANDARD PRICE		Early Booking
Adult	\$37	\$35
Child	\$18.50	\$17.50
TIME		
	Date	Time
Depart	February 20	1400
Return	February 20	1730
HIGHLIGHTS		
<ul style="list-style-type: none"> <li>Visit significant historical sites of WWII</li> <li>Visit Changi Village &amp; Malay Village</li> </ul>		

## SNG 104-102

## TRACING SINGAPORE'S COLONIAL PAST

Half day



This trip traces Raffles' vision for Singapore to become a vital international port and trading center for the Far East. Begin your trip down memory lane with a visit to the Raffles Landing Site, where Sir Stamford Raffles is believed to have first set foot in 1819, and then to an exhibition that traces the history of the Singapore River. Next is a stop at Raffles Hotel, a hive of activity for the high-society in the 1800s. Here, you will be served light refreshments. The tour continues with a bumboat cruise. These hardy vessels were once used to shuttle cargo but today, they steer you through a kaleidoscope of historic Singapore River and harbor images. Step off at Clarke Quay, a riverside festival village, and visit a pewter gallery to discover the history of pewter and the role of tin in the development of Singapore as a trading port. A demonstration on pewter smithing is also included. **Please note:** No shorts, sandals, clogs or slip-on shoes are permitted.

STANDARD PRICE		Early Booking
Adult	\$55	\$52
Child	\$27.50	\$26
TIME		
	Date	Time
Depart	February 20	1400
Return	February 20	1830
HIGHLIGHTS		
<ul style="list-style-type: none"> <li>Learn about Sir Stamford Raffles' influence on colonial Singapore</li> <li>Pewter smithing demonstration</li> </ul>		

## SNG 105-102

## SENTOSA AT SUNSET

Full day



Enjoy a scenic cable car ride to Sentosa where you can catch a bird's eye view of the Singapore skyline and her busy port. The tour on the island begins with a visit to the Images of Singapore Museum, which showcases the Pioneers of Singapore, the Japanese Occupation during World War II, the Surrender Chamber and the Festivals of Singapore.

From here, a bus ride will take you to the Underwater World, Asia's largest and most innovative tropical oceanarium that houses over 2,300 marine specimens. The tour ends with a visit to Songs of the Seas – Singapore's multi-sensory extravaganza – to watch a world-class water show comprising dramatic effects, water jets, lasers, bursts of fire and foot-tapping music set in the sea. Return by coach to the pier. **Please note:** Dinner will be on your own arrangement.

STANDARD PRICE		Early Booking
Adult	\$96	\$91
Child	\$48	\$45.50
TIME		
	Date	Time
Depart	February 20	1400
Return	February 20	2030
HIGHLIGHTS		
<ul style="list-style-type: none"> <li>Images of Singapore Museum</li> <li>Underwater World, Asia's largest oceanarium</li> <li>Water show at Songs of the Seas</li> </ul>		



## SNG 107-103

## NIGHT SAFARI

Half day

The world's first Night Safari, set in 40 hectares of secondary jungle adjoining the Singapore Zoo, will unfold the mystery and drama of the jungle at night with stunning effect. Begin your tram ride and the opportunity to see a myriad of nocturnal animals, from fierce predators to timid forest dwellers, in their natural habitat under subtle moon-glow lighting. Enjoy the experience in the complete safety of a tram and with a sense of roaming through a jungle. Your tram ride takes you through the East and West loops, passing a large reservoir and weaving through selected habitats designed to replicate the natural environment from the Himalayan foothills to the jungles of South-East Asia and Africa. On completion of the tram ride, your guide will lead you on a walking trail where you will be able to view the animals at closer quarters. **Please note:** Dinner will be at your own expense.



STANDARD PRICE		Early Booking
Adult	\$57	\$54
Child	\$28.50	\$27
TIME		
	Date	Time
Depart	February 20	1830
Return	February 20	2230
HIGHLIGHTS		
<ul style="list-style-type: none"> <li>World's first Night Safari</li> <li>Tram ride with opportunity to see various nocturnal animals and a large reservoir by moonlight</li> </ul>		

## SNG 106-103

## NIGHT OUT IN CHINATOWN

Half day



Discover the rich historical beginnings of Chinatown at the Chinatown Heritage Center. Housed in three restored shop-houses, the Centre takes you back to a different time in the history of the area and immerses you in the life of the early Chinese immigrants. Experience first-hand what it is like to live in the dark,

cramped quarters of a typical Chinatown shop-house. Today's Chinatown is as exuberant as it was in the past, and the evenings come alive with the hustle and bustle of the Night Market. After dinner, wander along the narrow lanes and test your bargaining skills with the street vendors selling everything from fashion items and leather goods to souvenirs. Then, hop a trishaw, the "chauffeured" limousine of the era, for a ride through Chinatown to Clarke Quay. Board a bumboat, a traditional cargo-ferrying craft, for a cruise along the Singapore River with views of beautifully restored godowns, contrasting with modern skyscrapers of the financial district, colonial buildings and the iconic Merlion statue. Finally, disembark at the Esplanade - Theatres by the Bay where your wonderful evening comes to an end.

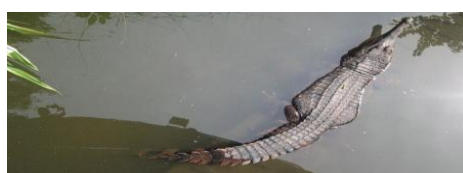
STANDARD PRICE		Early Booking
Adult	\$96	\$91
Child	\$48	\$45.50
TIME		
	Date	Time
Depart	February 20	1830
Return	February 20	2230
HIGHLIGHTS		
<ul style="list-style-type: none"> <li>Chinatown Heritage Center</li> <li>Trishaw ride</li> <li>Bumboat cruise along Singapore River</li> <li>Dinner included</li> </ul>		

## Day 2: Thursday, February 21

## SNG 108-101

## MORNING AT THE ZOO

Half day



Leave the city behind and head north to Mandai for the Singapore Zoological Gardens, located on 28 hectares of secondary forests and surrounded by the tranquil waters of the Seletar Reservoir. It is acclaimed as the finest zoo in Asia and the most beautiful in the world. The zoo houses 2,100 animals, 80% of which are endangered. The animals are exhibited in tastefully-landscaped enclosures amidst lush greenery and open-concept enclosures.

STANDARD PRICE		Early Booking
Adult	\$49	\$47
Child	\$24.50	\$23.50
TIME		
	Date	Time
Depart	February 21	0830
Return	February 21	1230
HIGHLIGHTS		
<ul style="list-style-type: none"> <li>Singapore Zoological Gardens, acclaimed as finest zoo in Asia</li> <li>Views of Seletar Reservoir</li> </ul>		

**SNG 109-101****HISTORIC PLACES OF WORSHIP****Half day**

Begin with a visit to Thian Hock Keng Temple, the oldest Chinese temple in Singapore and also the most important Hokkien temple. Sailors were said to have given thanks at this Taoist-Buddhist temple as early as 1821. Then, move on to Sri Mariamman Temple, a designated national monument that is the oldest Hindu temple in Singapore and dates back to 1827. The preferred venue of most Hindu weddings, this temple is where the annual fire-walking ceremony or Thimithi is held. Continue to St Andrew's Cathedral, an Anglican Church. This is the second building to be erected on this site; the original was built by G.D. Coleman and consecrated in 1838. However, the Church was demolished in 1852 following two lightning strikes. The present Cathedral was designed by Colonel Ronald MacPherson in 1856.

Proceed to another gazetted national monument, the Cathedral of the Good Shepherd, the oldest Catholic Church in Singapore and also the home of the present Archbishop. When the Church's foundation stone was initially laid in 1843, little did the people know that it would become the center of an architectural design showdown between colonial architect-greats, D.L. Sweeney and J.T. Thomson. Thomson's design was eventually chosen even though it was considered more expensive than Sweeney's. Charles Dyce, a third architect, added a tower and spire to the design a year later. The last visit will be to another interesting mosque, the Sultan Mosque, built originally with a S\$3,000 grant from Sir Stamford Raffles. The Sultan Mosque, with its massive dome and huge prayer hall, is one of Singapore's most imposing religious points for Muslims. The present Sultan Mosque, designed by Denis Santry, was completed in 1928.

STANDARD PRICE		Early Booking
Adult	\$46	\$44
Child	\$23	\$22
TIME		
	Date	Time
Depart	February 21	0830
Return	February 21	1300
HIGHLIGHTS		
<ul style="list-style-type: none"> <li>• Thian Hock Keng Temple</li> <li>• Sri Mariamman Temple</li> <li>• Cathedral of the Good Shepherd</li> <li>• Sultan Mosque</li> </ul>		

**SNG 110-101****SCHOOL OF HARD KNOCKS****Half day**

Welcome to Royal Selangor, the largest pewter factory in the world! Before starting the tour around the factory, a briefing will enlighten you on how Royal Selangor's pewter is made. The pewter is lead-free and composed of 97% tin, with 3% of copper and antimony added for strength. After the tour, have hands-on-experience in the art of pewter-crafting. Appreciated for its warmth



and subtle sheen, pewter is highly malleable and adapts perfectly to shapes and forms that may incorporate both beauty and function. In the hands of skilled craftspeople, this versatile alloy is transformed into an endless range of homeware and gifts. Despite the adoption of technology, every piece of Royal Selangor pewter is still handcrafted to an astonishing degree. Using just a few simple tools, you will make and personalize a pewter dish of your own. Step by step, an experienced pewtersmith will guide you through the process of forming, scraping, polishing and packing. The dish you make is yours to keep as well as the School of Hard Knocks apron. At the conclusion, you will also be awarded a certificate for your one-of-a-kind handmade masterpiece.

STANDARD PRICE		Early Booking
Adult	\$71	\$68
Child	\$35.50	\$34
TIME		
	Date	Time
Depart	February 21	0900
Return	February 21	1230
HIGHLIGHTS		
<ul style="list-style-type: none"> <li>• Royal Selangor, largest pewter factory in the world</li> <li>• Make your own pewter dish</li> </ul>		



Rediscover the past through this tour of World War II sites. Tucked into the hillside of Fort Canning is the Battle Box, the largest underground command center of the British Malaya Command Headquarters during World War II. Comprising 22 rooms linked by a corridor, this complex is bomb-proof and also capable of recycling its own air supply. Through the use of special audio-visual effects and high-quality animatronics, visitors are able to relive the morning of February 15, 1942, when Singapore fell to the Japanese.

Located in the east of the Padang, the Civilian War Memorial is dedicated to all those who perished during the Japanese Occupation of Singapore from February 15, 1942 to September 12, 1945. Four identical vertical pillars rise to a pinnacle of 92.5 meters, symbolizing the shared experiences of the four major races of Singapore — Chinese, Malay, Indian and other races. The remains of the unidentified war victims are buried beneath the monument.

Built by the British in 1939 for the defense of Singapore, the Johore Battery is a gun emplacement site consisting of a labyrinth of tunnels. The tunnels were used to store ammunition to support three monster guns that could fire 15-inch shells. The guns were the largest installed outside Britain during World War II. They were destroyed before the surrender of the British army, and the tunnels were sealed after the war. The location remained a secret until the Singapore Prisons Department rediscovered the tunnels in April 1991. Today, replicas of the monster gun and 15-inch shell sit at the Johore Battery.



STANDARD PRICE		Early Booking
Adult	\$60	\$57
Child	\$30	\$28.50
TIME		
	Date	Time
Depart	February 21	0900
Return	February 21	1300
HIGHLIGHTS		
<ul style="list-style-type: none"> <li>Battle Box, British Malaya Command Headquarters during WWII</li> <li>Civilian War Memorial</li> <li>Johore Battery</li> </ul>		



You'll discover almost 50 percent of Singapore is covered by greenery - Singapore is a city in a garden! Start your tour at the 150-year old Singapore Botanic Gardens - a leading equatorial botanic garden of 63 hectares. It has an array of botanical and horticultural attractions with a rich history and a wonderful plant collection of worldwide significance. Visit the National Orchid Garden, located on the highest hill in the Singapore Botanic Gardens. Three hectares of carefully landscaped slopes provide a setting for over 1,000 species and 2,000 hybrids, with about 600 species and hybrids on display.

Next, proceed to HortPark - promising you an enticing and entertaining journey...the turtle and tortoise museum will give you an insight into the worlds of these shelled ones. HortPark is part of the Southern Ridges, which also comprises Mount Faber Park, Telok Blangah Hill Park and Kent Ridge Park. It is a one-stop gardening hub that brings together gardening-related, recreational, educational, research and retail activities under one big canopy in a park setting. Finally, stop at Gardens by the Bay, spanning 101 hectares that comprises three waterfront gardens. In this horticultural oasis nestled in the heart of the city, there's so much to explore! Truly a spectacular and colorful national icon, Gardens by the Bay will capture the imagination of many.

STANDARD PRICE		Early Booking
Adult	\$40	\$38
Child	\$20	\$19
TIME		
	Date	Time
Depart	February 21	0930
Return	February 21	1330
HIGHLIGHTS		
<ul style="list-style-type: none"> <li>Singapore Botanic Gardens &amp; National Orchid Garden</li> <li>HortPark &amp; other Southern Ridges parks (one-stop gardening hub)</li> <li>Gardens by the Bay</li> </ul>		



